



HEALTH & SAFETY PRESENTATION

Bangkok International Trade & Exhibition Centre

CONTENTS

Emergency Procedures

Assembly Points

Emergency Exit and Fire Hose Cabinet

Fire Alarm System

EMERGENCY PROCEDURES

Emergency or suspected situation has been found

- Fire
- Gas Leakage
- Unusual Events

Inform the Staff

- BITEC – BITEC staffs nearby or phone no. 027261999#0
- Reed Tradex – Customer Service Center or Counter in front of each room
- Security Staff at Front or Back of each hall

Building Management Team and First Aid Team

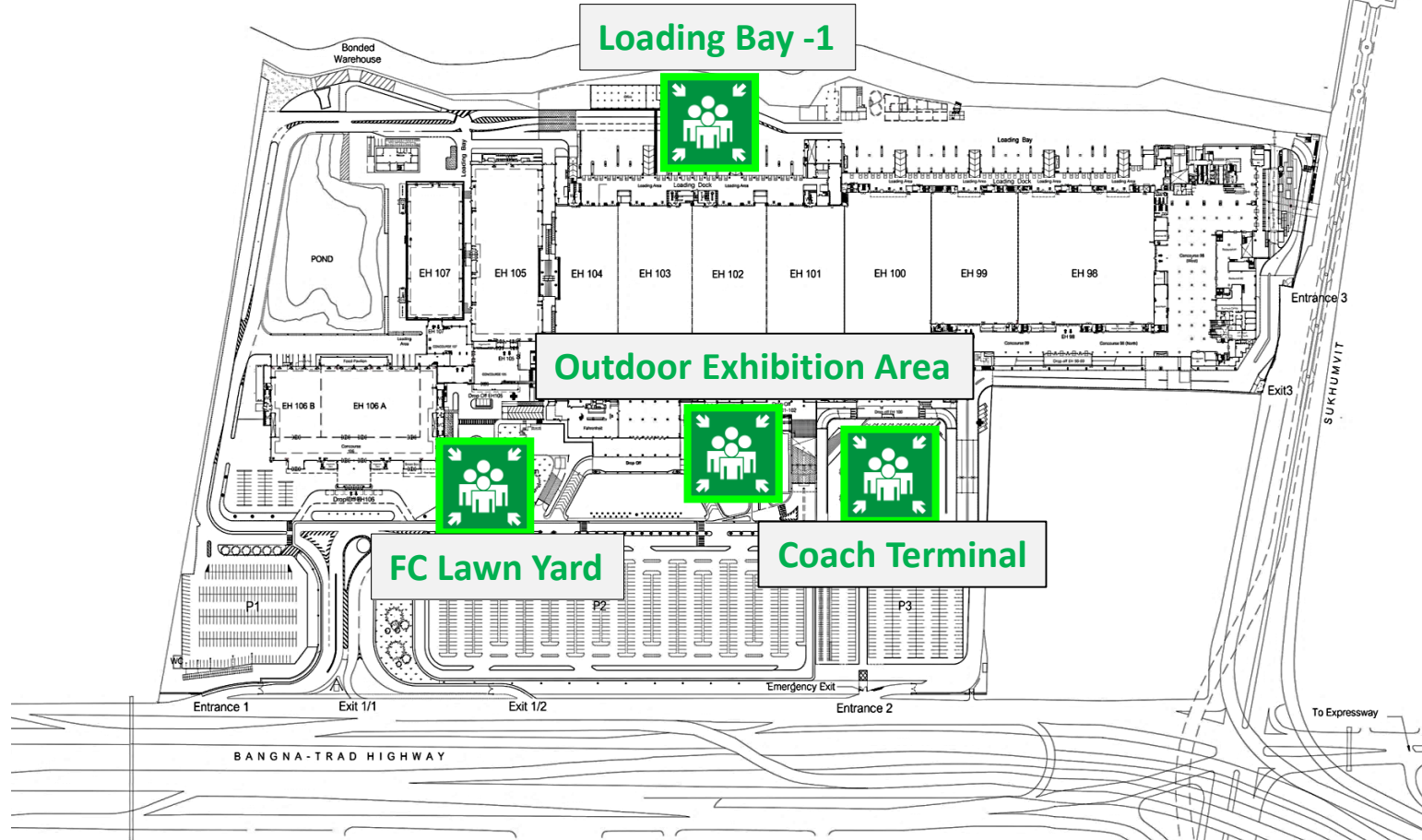
- Control the situation with nearest Police station and Fire station
- First aid team standby ; need help, please contact 027261999#0
- Officers announce and evacuate if incident is severe.

EVACUATION

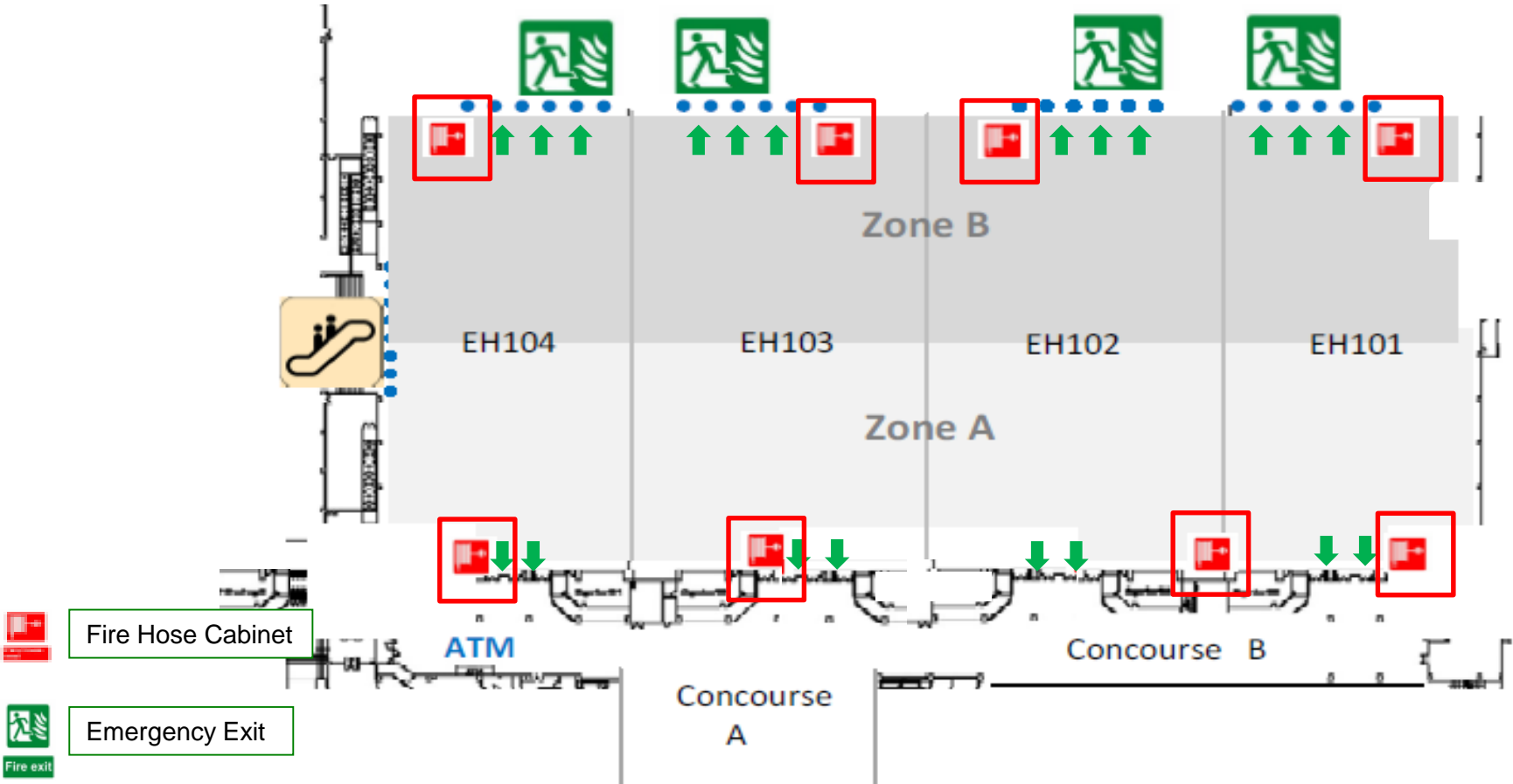


BITEC Staff will hold the green flag and lead you to assembly point

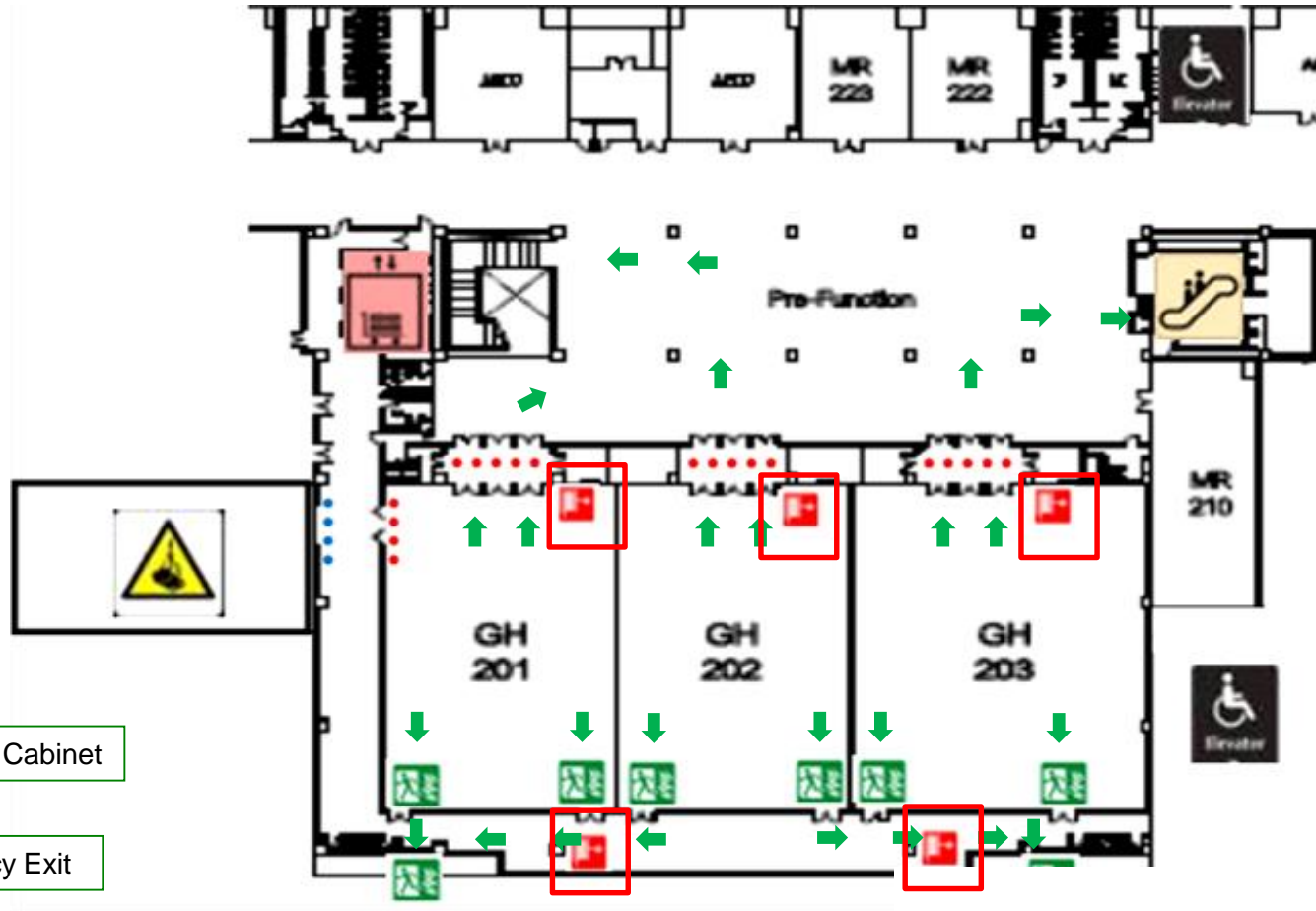
ASSEMBLY POINT



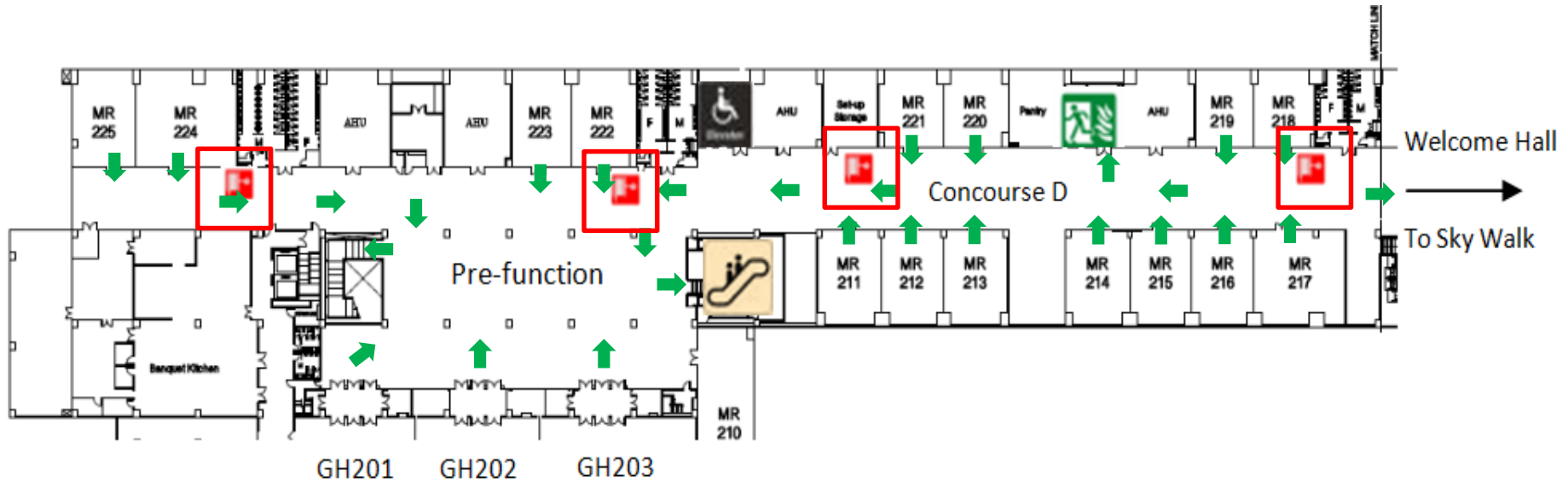
EMERGENCY EXIT and FIRE HOSE CABINET





EMERGENCY EXIT and FIRE HOSE CABINET



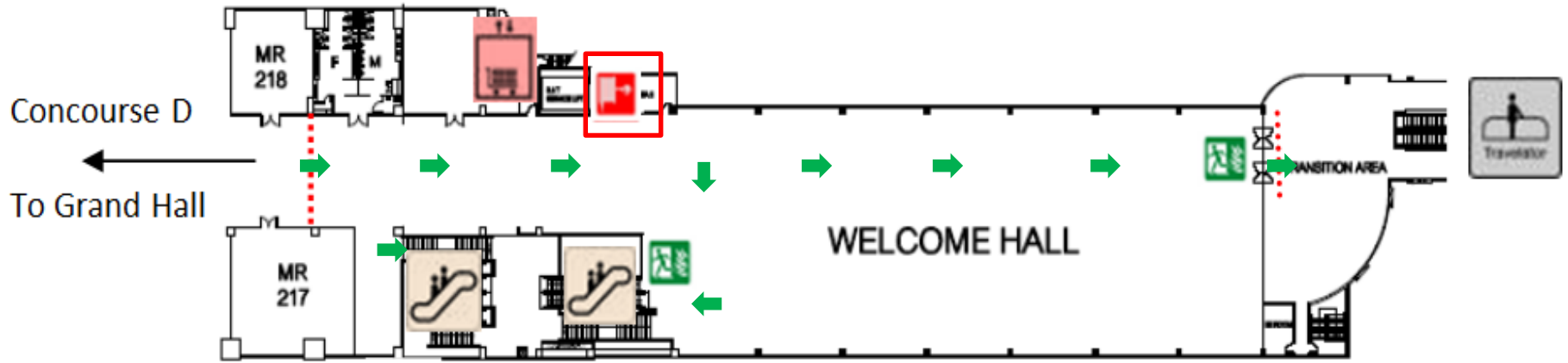
EMERGENCY EXIT and FIRE HOSE CABINET





 Fire Hose Cabinet

 Emergency Exit
 Fire exit

EMERGENCY EXIT and FIRE HOSE CABINET



 Fire Hose Cabinet

 Emergency Exit


FIRE HOSE CABINET



Can push the plastic sheet
to bring out the device.



FIRE ALARM SYSTEM



Manual Notification device

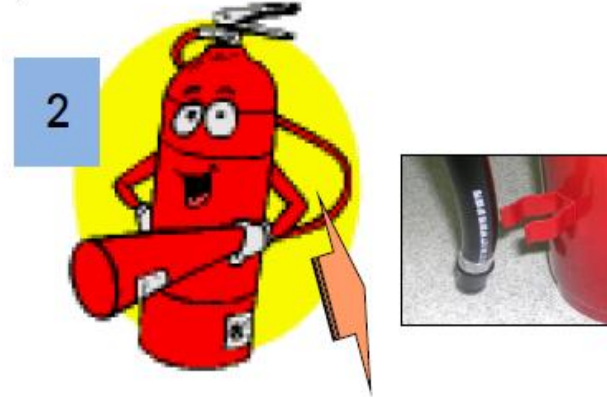


Fire Alarm

- In case of a fire, pull out the manual alarm device.
- The glass rod is broken and the power supply to the OPE Control room.
- The fire bell will ring, after the fire has been confirmed.

HOW TO USE FIRE EXTINGUISHER

Pull → Off → Press → Wave



ENTRANCE & EXIT



Do not place anything for safety





THANK YOU